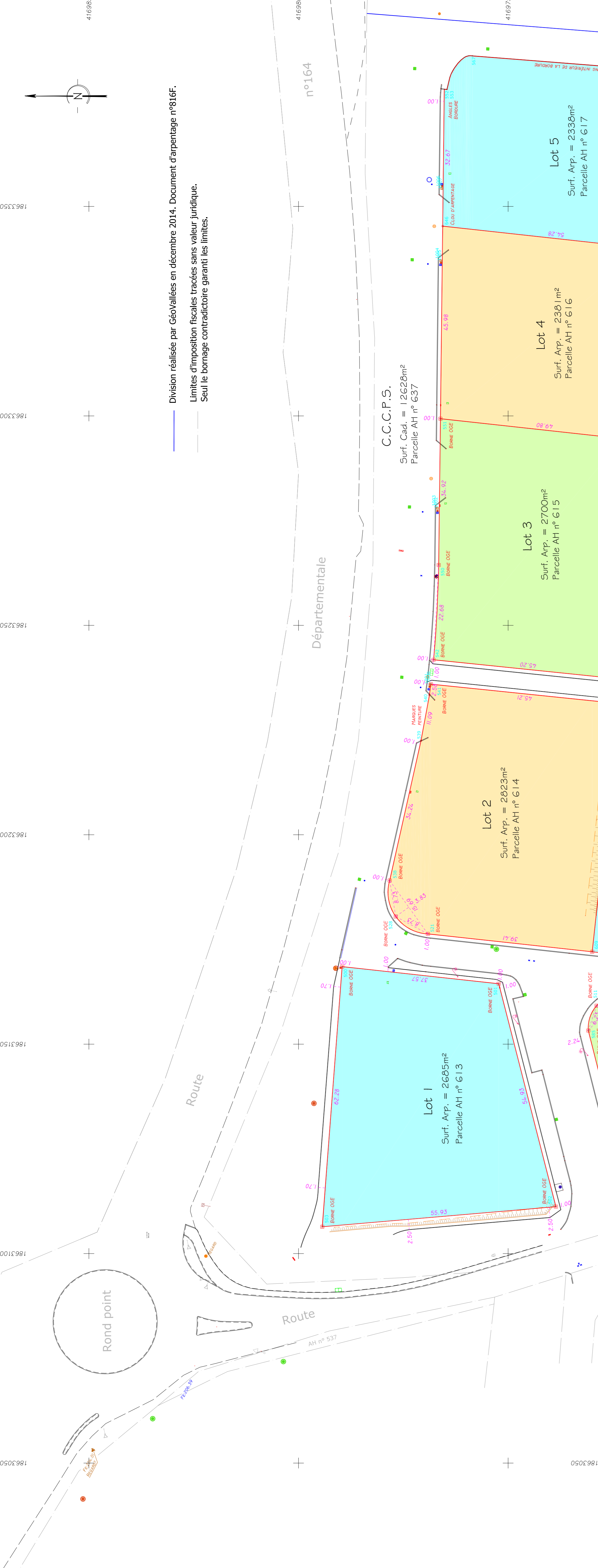



Matricule	X Insertion	Y Insertion
500	1863180.51	4169786.59
501	1863180.51	4169786.59
502	1863111.21	4169736.61
503	1863106.41	4169794.34
505	1863179.13	4169691.46
506	1863156.95	4169725.92
511	1863169.20	4169703.62
518	1863176.32	4169768.14
521	1863180.47	4169776.81
526	1863222.48	4169777.92
539	1863223.39	4169768.77
541	1863235.96	4169768.45
542	1863241.76	4169767.81
543	1863241.76	4169767.81
551	1863269.32	4169766.14
552	1863377.96	4169765.24
553	1863377.90	4169764.57
554	1863377.90	4169764.57
556	1863379.35	4169697.20
558	1863379.35	4169697.20
578	1863372.31	4169670.93
579	1863380.49	4169672.22
580	1863347.38	4169673.06
581	1863347.38	4169673.06
582	1863227.47	4169666.16
585	1863153.26	4169730.88
586	1863113.60	4169720.94
587	1863117.63	4169704.47
588	1863117.63	4169704.47
606	1863157.65	4169666.19
607	1863156.93	4169665.07
608	1863161.88	4169723.31
609	1863161.88	4169723.31
610	1863231.32	4169722.84
611	1863237.14	4169722.84
612	1863381.88	4169707.02
613	1863305.85	4169677.63
614	1863305.85	4169677.63
615	1863329.91	4169674.98
616	1863333.98	4169712.25
617	1863353.94	4169672.64
618	1863353.94	4169672.64
619	1863266.02	4169696.80
620	1863261.05	4169720.23
621	1863281.24	4169680.30
622	1863285.32	4169717.57
623	1863285.32	4169717.57
624	1863283.13	4169726.56
625	1863287.83	4169651.93
626	1863356.10	4169623.93
627	1863352.88	4169627.15
628	1863352.88	4169627.15
629	1863292.12	4169669.03
630	1863236.92	4169674.75
631	1863186.95	4169680.36
632	1863186.95	4169680.36
633	1863137.65	4169696.50
634	1863266.02	4169671.89
635	1863281.75	4169634.95
636	1863235.67	4169637.96
637	1863181.95	4169626.39
638	1863181.95	4169626.39
639	1863354.90	4169662.24
640	1863350.34	4169662.81
641	1863274.23	4169677.96
642	1863274.23	4169677.96
643	1863156.51	4169646.88
644	1863133.67	4169648.75
645	1863184.34	4169643.89
646	1863184.34	4169643.89
647	1863339.40	4169711.62
648	1863293.91	4169716.64
649	1863156.97	4169650.85
650	1863185.14	4169650.85
651	1863210.41	4169644.91

Système RGF93 Projection CC46 (Classe 2)



Division réalisée par Géovallées en décembre 2014. Document d'arpentage n°816F.
 Limites d'imposition fiscales tracées sans valeur juridique.
 Seul le bornage contradictoire garantit les limites.




Géométre-Expert
GARANT DU CADRE DE VIE DURABLE

GéoVallées Géomètres-Experts D.P.L.G.
 Pascal & Martine LACOUR
 Successeurs de la Société Thierry Baudouin & Associés et héritiers des archives de José Heilmann
 Siège Social: ZA Pied Gal - 13 rue des Trois Capitaines - 26400 CREST
 Bureau Secondaire: ZA Cocouse - 85 rue des Sèterées - 26150 DIE
 Tél. : 04 75 25 15 61 - Fax: 04 75 21 94 54 - email : gnomales@geometre-expert.fr

Commune de AOUSTE sur Sye (Drôme)
 ZA PAS DE LAUZUN - C.C.C.P.S.
 Friche VICAT - SECTION AH

PLAN DE DIVISION
 Joint au document d'arpentage n° 892 W numéroté le 29 mars 2019

Echelle 1/500



Mars 2019
 Dossier 178-2014